



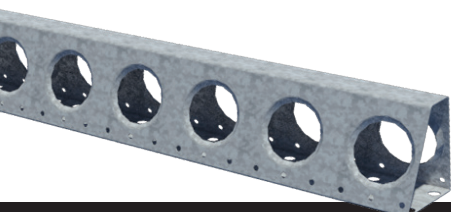
FASTENING PLYWOOD TO E-BEAM

Select the appropriate **FASTENER** for your **Application**

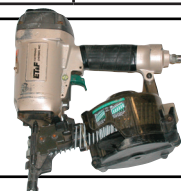
	FASTENER	PULL-OUT-FORCE	SIZE	FASTENER
SINGLE POUR (YELLOW)	E-BEAM Nail (Yellow) (#4 Box, 1,000/box) EFCO ITEM #10890	160 lb (73 kg)	.100" x 1 1/2" (2.5 mm x 38 mm)	
	E-BEAM Nail (Yellow Collated) (250/coil 4,000/case) EFCO ITEM #07890	160 lb (73 kg)	.100" x 1 1/2" (2.5 mm x 38 mm)	
MULTIPLE POURS (GREEN) 410 LB	E-BEAM Nail (Green) (#4 Box, 1,000/box) 2352Z, .100 (2.5 mm) EFCO ITEM #12890	410 lb (186 kg)	.100" x 1 3/8" (2.5 mm x 35 mm)	
	E-BEAM Nail (Green Collated) (250/coil 4,000/case) EFCO ITEM #08890	410 lb (186 kg)	.100" x 1 1/2" (2.5 mm x 38 mm)	
FASTENERS PULLS THROUGH PLYWOOD (RED) 500 LB	Self-Drilling Screw 1 5/8" (41 mm) (100/bag) SDS PH FL Reamer #3PT Zinc Plated EFCO ITEM #11890	500 lb (228 kg)	#10-16 x 1 5/8" (M5 x .08 mm x 41 mm)	
	Self-Drilling Screw 2 1/4" (57 mm) (100/bag) SDS PH FL Reamer #3PT Life Coat EFCO ITEM #13890	500 lb (228 kg)	#8-18 x 2 1/4" (M4 x .07 mm x 57 mm)	
	Screw 1 5/8" (41 mm) Automatic Feed for 3/4" (19 mm) Material Carlson Systems 800-372-6052 1 5/8" (41 mm) Wood to Steel Wing tipped- Self-Drilling Screw ITEM #SFW8162	500 lb (228 kg)	1 5/8" (41 mm)	
PLYWOOD TO INSERT ANGLE	Elevator Bolt 1/4" (6 mm) x 1 1/2" (38 mm) for plywood to insert angle	NOT TESTED	1/4" x 1 1/2" (6 mm x 38 mm)	

AVAILABLE THROUGH EFCO

CUSTOMER TO SOURCE LOCALLY



AUTOMATED SCREW SYSTEM
MODEL# D600-2 SCREW
GUN BY SENCOCARLSON SYSTEMS
CONTACT: 1-800-372-6052



ET&F COIL NAIL GUN
MODEL 610C
CONTACT: 1-800-248-2376

Ref: Plywood to a pine wood nailer strip with a deck screw will pull-out at 306 lb (138.8 kg).
Note: Pull-out loads are EFCO laboratory results and do not include a safety factor.

Distributor - If your local distributor does not carry what you want, a U.S. supplier with multiple outlets is Carlson Systems 800-372-6052

EFCO'S E-BEAM joist is made of lightweight galvanized steel and uses no wood nailer strip. Use either nails or screws to attach a sheet of plywood to the steel joist.