



# Worth Its Weight In Gold...

## In Just Seconds

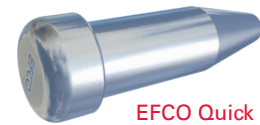
With EFCO Heavy-Duty Forming Systems, the **EFCO Quick Bolt** is the fastest and lightest form fastener available. With fast, six square threads per inch fastener, no hammer is required. In just seconds, the **Quick Bolt** assembly can be inserted, nutted and tightened with a spud wrench to achieve a tensile capacity of 19,000 lb working load and a single fastener shear capacity of 9,000 lb to connect form panels.

## Lightweight, Simple Mechanics

The **EFCO Quick Bolt** leaves clamp fasteners behind with its light weight and its simple mechanics. Clamp systems range from 6 to 12 lb each compared to a 1/2 lb **Quick Bolt** with nut (only 8% of the weight). When an even faster connection and a superior concrete finish is required, the **EFCO Quick Pin** in combination with the **Quick Bolt** is a win-win team. The **Quick Pin** can replace many bolted connections. This further reduces assembly labor.

## The Versatile Quick Bolt

The same single **Quick Bolt** fastener can be used to connect panels, scaffolding, top and bottom yokes, aligning and bracing, and accessories including pipe braces to the system. When the EFCO SUPER STUD® System works for you, again only the single and simple **EFCO Quick Bolt** is used for a fastener. In contrast, clamp type systems only connect panels.



EFCO Quick Pin

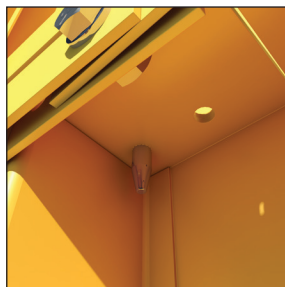
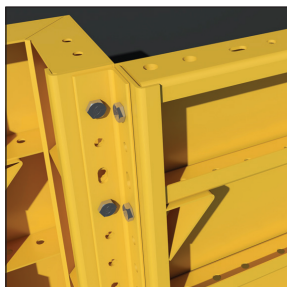
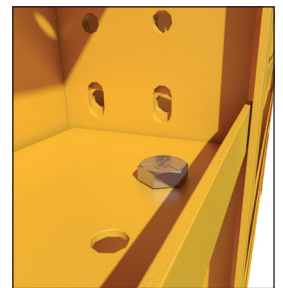


EFCO Quick Bolt



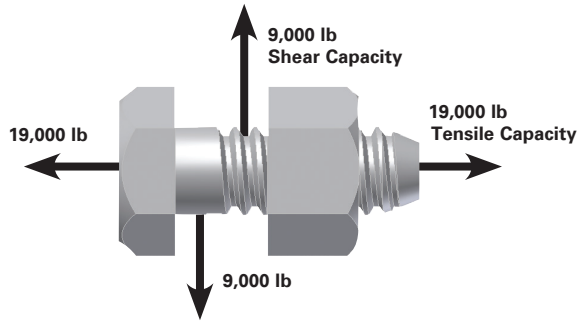
## Compare

Compare **EFCO Quick Bolts** with competitive clamps! The **Quick Bolt** is very small and light for what it does. It is "worth its weight in gold". A carpenter can carry a dozen **Quick Bolts** in his pouch and treat them like nails. You can not do this with a clamp. An added advantage to workers - **EFCO Quick Bolts** can be easily stored in the ribs of the form panels during cycling.



## The Pay Off

The lightweight **EFCO Quick Bolt** really pays off during assembly and cycling of forms. Imagine the difference when you assemble and cycle a gang of forms with **EFCO Quick Bolts** at only 1/2 lb each versus the clamp type systems that weigh-in at 6 to 12 lb each. For example, only 30 **Quick Bolts** weighing less than 17 lb need to be removed to fly a 56'-0" x 20'-0" **EFCO PLATE GIRDER®** gang in four picks. The clamp type accessories that would need to be removed for the same size gang would weigh 1,059 lb, more than 60 times the weight. If a contractor has a crew of four working the forms, each worker has to handle 250 lb with the clamp system compared to 5 lb with the EFCO system to strip this form. Plus, this weight must be handled twice during the cycle, first in stripping, then in resetting the gang. The weight difference adds up in time and money.



## Quick Bolt Benefits

We looked at the features of the **Quick Bolt** and now let's look at the benefits:

- Stronger
- Lighter
- Storage at point of use when not in use
- Far less cost
- With everything considered, less labor cost to assemble and dismantle.
- Flexibility, the EFCO Quick Bolt connects in addition to form panels, most all EFCO accessories.



## Make The Comparison

Add all the features and benefits together, including its versatility and labor saving, and the tested and proven EFCO Quick Bolt is by far the best value and lowest cost heavy-duty form fastener available.

## Unmatched Strength

When lifting assemblies of form equipment, the labor efficient **EFCO Quick Bolt**, with its unmatched fastener tensile and shear strength, allows the pick and movement of large panels without any sagging and shifting joints. The "shear pin" action of the **Quick Bolt**, beats the friction sliding resistance of the clamp. The "shear pin" **Quick Bolt** also aligns to eliminate offsets in gang panel face sheets.

Comparison	Compare the Features		Competitors Clamps		Capitalize on the Benefits
	EFCO Quick Bolt	EFCO Quick Pin	Clamp A	Clamp B	
<b>Weight</b>	1/2 lb	1/2 lb	10.6 lb	11.3 lb	The EFCO Quick Bolt is very small and lightweight for what it does. It is "worth its weight in gold". A worker can carry a dozen Quick Bolts in his pouch and treats them like nails. You cannot do this with a clamp.
<b>Tensile Capacity</b>	19,000 lb	0 lb	3,900 lb	3,370 lb	The amazing strength of the EFCO Quick Bolt gives you the ability to pick very large panels easily without any sagging and shifting joints. Clamps have very limited tensile strength capacity.
<b>Shear Capacity</b>	9,000 lb	9,000 lb	Approx. 1,300 lb	1,350 lb	The almost perfect alignment of the face sheets of adjacent forms is very critical to good concrete finish. The only way to assure the line up of forms is to use the EFCO Quick Bolt that will automatically align the face sheets in a shear. The benefit here is a good concrete finish with very little effort. When you want a superior concrete finish, get perfect alignment using the EFCO Quick Pin.
<b>Form Ties</b>	Fewer Ties Required	Fewer Ties Required	More ties and tie accessories plus associated labor and costs.		The shear pin action of the EFCO Quick Bolt allows the load to be transferred through the form joints in the EFCO <i>PLATE GIRDER</i> Form System. This dramatically reduces the number of ties provides huge reductions in labor and associated costs to set and remove ties and to patch ties holes.
<b>Versatility</b>	Form Panel Connections and all Accessories	Form Panel Alignment Only	Only works as a panel clamp.		You can connect form panels plus all form accessories with the simple Quick Bolt. A clamp can only connect form panels. The clamp system requires different hardware for all other accessories.
<b>Tool Requirements</b>	Many times a Spud Wrench but sometimes only a finger tight requirement.	Hammer	Hammer		In just seconds, the Quick Bolt assembly can be inserted, nutted and tightened with a spud wrench. Of course, a hammer is a hammer.
<b>Faster Handling</b>	Quick Assembly and Storage	Precision Alignment of Panels	More heavy pieces to remove because of smaller pick sizes.		In just seconds, with the fast, six square threads per inch Bolt fastener, the Quick Bolt assembly can be inserted and nutted. EFCO Quick Bolts can easily be stored in the ribs of the form panels during cycling. This is an added advantage to workers.
<b>Cost</b>	\$2.25	\$2.25	\$38.00 to \$55.00/each		The cost benefit for using the EFCO Quick Bolt is very obvious. \$2.25 is a fraction of \$38.00.

Contact your EFCO Territory Manager or District Manager

**YOU CAN CONTACT US DIRECTLY AT**

e-mail: [info@efcoforms.com](mailto:info@efcoforms.com) • [www.efcoforms.com](http://www.efcoforms.com) • 1-888-223-3440