

APPLICATIONS



EFCO SUPER PLATE GIRDER has over twice the moment carrying capacity of classic PLATE GIRDER to form larger, longer spans without shoring to the ground.



Large gang crane handling without the need for stiffbacks.



Modular design offers versatility and flexibility when combined with standard accessories.

EFCO continues to grow its industry-leading self-spanning capabilities with the introduction of EFCO's new SUPER PLATE GIRDER forming system. The new standard for large span applications!

A FOUNDATION FOR FORMWORK EXCELLENCE

EFCO's SUPER PLATE GIRDER builds upon the legacy of the classic EFCO PLATE GIRDER features and benefits:

- Durable high-strength alloy steel construction
- Precision built panels providing excellent alignment of form joints
- Self-spanning capability to reduce the need for external supports
- Large gang crane handling without the need for stiffbacks
- Easily climb the form using the upturned leg of the rib when installing it horizontally for column and wall forming applications
- Modular design offers versatility and flexibility when combined with standard accessories

NOW EVEN STRONGER!

- A minimum of twice the moment carrying capacity of classic PLATE GIRDER to form larger, longer spans without shoring to the ground
- On average, it has two times the pour pressure rating of classic PLATE GIRDER so pour rates can be increased
- Half the labor required to assemble the system compared to classic PLATE GIRDER with tension and compression beams

These features and benefits enable EFCO to provide you the best value and lowest in-place concrete costs.

FASTENER OF CHOICE

One important difference is EFCO's commitment to use A325 bolts. While A490 bolts are technically stronger when used the first time, they are sensitive to fatigue. Tightening and releasing A490 bolts and then re-using them is not advised by structural steel industry standards.

The EFCO PLATE GIRDER® Form System is a registered trademark. This product was designed for use with products manufactured by EFCO and it is recommended that it not be commingled with products of other manufacturer's forming systems.

CONTACT EFCO AT:

EFCO Corp., 1800 Broadway Ave, Des Moines, IA 50313

PHONE: (515) 266-1141 | EMAIL: info@efcoforms.com | WEBSITE: www.efcoforms.com | YouTube

IDENTIFYING THE NEED AND EFCO MOVING TO FILL IT

Bridges are getting longer, wider, and heavier. This construction is being supported with stronger concrete and stronger reinforcing steel, all weighing more. **SUPER PLATE GIRDER®**, has twice the spanning strength of EFCO's original **PLATE GIRDER**.

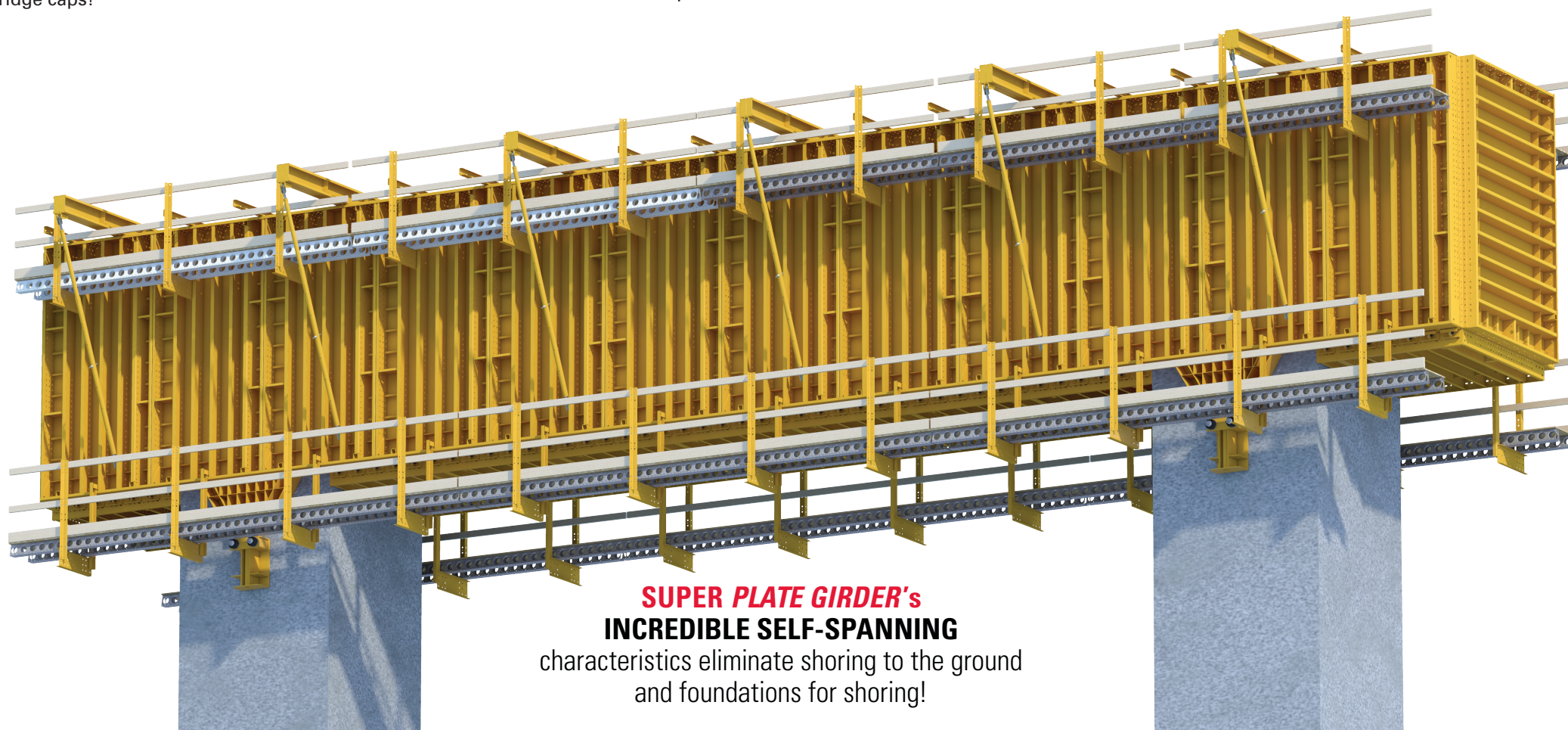
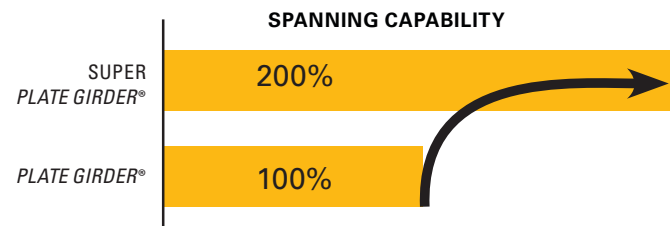
DOUBLE THE CAPACITY

EFCO's closest competitor in the self-spanning formwork market has compared its similar product to the original **PLATE GIRDER** and in some cases boasts of a 30% increase in spanning capabilities versus some of the standard **PLATE GIRDER** panel sizes.

EFCO's new **SUPER PLATE GIRDER** has taken it to an entirely new level, doubling the capacity of the original **PLATE GIRDER** and distancing itself from the next closest competitive system by 70%! This is the product you need to form wide spanning bridge caps!

THE RESULTS

LARGER & LONGER SPANS



SUPER PLATE GIRDER's INCREDIBLE SELF-SPANNING characteristics eliminate shoring to the ground and foundations for shoring!

THE NUTS AND BOLTS OF IT

EFCO is backed by quality, superior engineering, manufacturing, and field service. Add to this EFCO's proven knowledge and experience, and EFCO is the system of choice. EFCO's **SUPER PLATE GIRDER®** tension and compression connection uses (4) 1 1/4" (32 mm) A325 bolts and nuts. This compares to EFCO's competitor brand "X" bolt and nut form connectors. Competitor brand "X" specifies A490 bolts and nuts that are sensitive to fatigue. Tightening and releasing A490 bolts and then re-using them is not allowed. To quote the Specification for Structural Joints Using High Strength Bolts from the American Institute of Steel Construction (AISC) "Reuse: ASTM A490 bolts, ASTM F1852... shall not be reused." The comparison to the A325 speaks for itself.



ADDITIONAL EFCO PLATE GIRDER APPLICATIONS

The EFCO **PLATE GIRDER** forms used in self-spanning applications have another very important feature when used in a column forming application. The new **SUPER PLATE GIRDER** system delivers architectural concrete at up to two and a half times the Pour Pressure Capacity of the original **PLATE GIRDER** when used in a tieless column forming application. This enables you to pour columns faster, complete the work sooner without sacrificing the excellent concrete finish you get with EFCO formwork.

That is not all, the EFCO **PLATE GIRDER** is an excellent wall form that rarely requires walers and/or aligners.

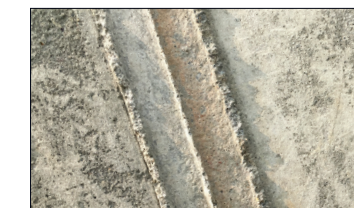
LET'S CARRY THIS FURTHER

When you compare the EFCO **PLATE GIRDER** wall forms to brand "Y," EFCO has another very important feature. Brand "Y" forms and form joints, and there are several brand "Ys" to compare to, leave very unsightly three-line impressions in the cast concrete, far from architectural concrete.

EFCO **PLATE GIRDER's** high-strength alloy steel face plates leave only a single, almost unnoticeable form joint line.



EFCO's single-line joint impression - architectural finish.



Competitor brand Y's triple-line joint impression, requiring more work and creating a poor concrete finish.

